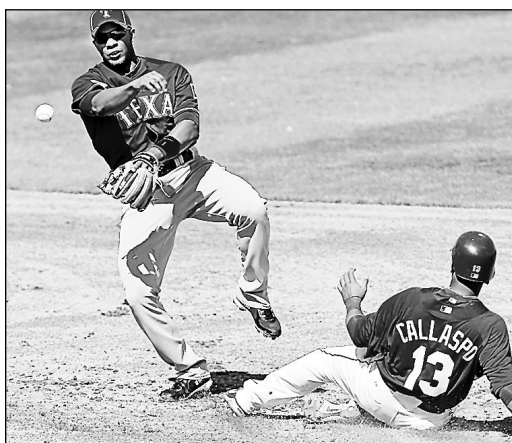


PHOTO OF THE DAY

Mid-Season Form



Texas Rangers shortstop Elvis Andrus tries to turn a double play as Kansas City Royals Roberto Callaspo slides into second base during a spring training game in Surprise, Arizona, Thursday. (Ron Jenkins/Fort Worth Star-Telegram/MCT)

AREA DIGEST



Stukel, Hinkley Earn Bowling Honors

Dawn Stukel and Rich Hinkley have been named the Yankton Bowlers of the Week.

Stukel, competing in the Sparetime League, rolled games of 159, 188 and 163 for a 510 series.

Hinkley, competing in the Moonshiners League, rolled games of 278, 199 and 195 for a 672 series.



JDRF Tourney April 10

The annual Juvenile Diabetes Youth Basketball Tourney will be held Saturday, April 10, at the Summit Activities Center.

The tournament is open to boys' and girls' teams in grades 5-8. There will be 'A' and 'B' Divisions.

Entry deadline is April 4. For more information, contact Randy Abink at 605-583-4430 or by e-mail at abink5@yvc.net.

Booster Club Meeting Monday

The Yankton High School Adult Athletic Booster Club will meet Monday, March 8, at 7:30 p.m. at the Summit Activities Center.

Anyone interested in YHS athletics is invited to attend. Contact Randy Lien at 665-0955 for more information.

Dates Set For Coyote Football Camps

VERMILLION — The University of South Dakota football program has announced dates and times for the 2010 Coyote Football Camps.

The Yankton Girls' Softball Association will have two weeks of clinics, March 7 and 14. These will be held at the Yankton Middle School gym.

An all-around clinic for grades K-5 will be held from 3-4:15 p.m. This will focus on throwing, hitting and defensive skills.

A pitching fundamentals clinic for grades 3-12 will run from 4:15-5:15 p.m. Pitchers will work on wrist snap, release and footwork.

An all-around clinic for girls in grades 6-12 will run from 6:15-7:45 p.m. This will focus on throwing, hitting and defensive skills.

For more information, go online to http://www.usdcoyotes.com.

Yankton Softball Clinics March 7, 14

The Yankton Girls' Softball Association will have two weeks of clinics, March 7 and 14. These will be held at the Yankton Middle School gym.

An all-around clinic for grades K-5 will be held from 3-4:15 p.m. This will focus on throwing, hitting and defensive skills.

A pitching fundamentals clinic for grades 3-12 will run from 4:15-5:15 p.m. Pitchers will work on wrist snap, release and footwork.

An all-around clinic for girls in grades 6-12 will run from 6:15-7:45 p.m. This will focus on throwing, hitting and defensive skills.

For more information, go online to http://www.yanktonsoftball.com.

MVCA Race For Christ April 3

The second annual Missouri Valley Christian Academy "Race For Christ" will be held Saturday, April 3, beginning at 11 a.m.

There will be a 5K walk, 5K run, 10K run and children's fun run/walk, each beginning at the Summit Activities Center and ending at the Williams Field track.

There will also be a pre-race soup and potato bar Friday night. For more information or to register, go online to mvcamustangs.org or call 605-664-2266.

Sertoma Baseball Registration March 12

The Yankton Sertoma Baseball Association will hold its registration for the summer 2010 season on March 12, from 5-6 p.m. at the Kelly Inn.

This registration is for Cal Ripken baseball, Babe Ruth baseball and Tee-Ball. For more information, contact Gary Pigney at 660-8080 or go online to http://yanktonsertoma.baberuthonline.com

Inaugural River Rat Marathon April 24

The inaugural River Rat Marathon will be held Saturday, April 24, in Yankton.

There will be full and half marathons, a 5,000-meter race and a bicycle cross country race.

Proceeds will benefit Charlie Battery 1/147th FA, the Charlie Battery Family Support and the Yankton Science Club. For more information, go online to www.riverratmarathon.com.

AREA CALENDAR

Get Updates At Yankton Online (www.yankton.net)

Youth Wrestling

VERMILLION TOURN. FIRST: Cooper Cornemann, Canon Elie, Tyvo Ellis, Spencer Huber, Cody Vornhagen.

SECOND: Braden Boyd, Jimmie Cunningham, Joey Hill, Grant Nelson, Noah Vetter.

THIRD: Bobby Darcy, Ryan Jarrett, Rube.

FOURTH: Corbin McNaatt, Macklin McNaatt, Evan Nelson, Brodey Peterson, Lucas Schoenfelder.

BRANDON VALLEY TOURN. FIRST: Canon Elie, Cole Peterson.

SECOND: Brody Peterson.

PARKSTON TOURN. FIRST: Cooper Cornemann, Jimmie Cunningham, Corbin McNaatt, Jarrett Rube.

SECOND: Spencer Huber, Bradley Peterson, Owen Warren, Ray Warners.

THIRD: Max Bert.

FOURTH: Robbie Darcy, Bradley Howe, Leven McNaatt, Justin Pavin, Brady Skillingstad, Cody Vornhagen.

FIFTH: Ryan Eischecker, Macklin McNaatt, Grant Nelson.

TEA TOURN. THIRD: Jordan Dahi, Trevor Ellis, Klyer Lillie, Evan Nelson.

FOURTH: Joey Holy.

City Volleyball

VERMILLION TOURN. RESULTS: Fred Haar def. Stockmen's Livestock 21-18, 21-17, 16-21.

STANDINGS: Stockmen's Livestock 11-1, Fred Haar 11-1, ShuCo 8-5, N Team 8-5, KPI Crushers 5-7.

WOMEN'S UPPER 8 LEAGUE. RESULTS: Girls Gone Wild 15-21, 21-8, 21-13.

STANDINGS: Collison Center Crushers 10-2, Supremes 10-2, Croton Elevator 10-2.

WOMEN'S LOWER 8 LEAGUE. RESULTS: Bonnie's Share Design def. The Associates 11-21, 21-16, 21-7.

STANDINGS: Collison Center Crushers 10-2, Supremes 10-2, Croton Elevator 10-2.

WOMEN'S LOWER 8 LEAGUE. RESULTS: Bonnie's Share Design def. The Associates 11-21, 21-16, 21-7.

STANDINGS: Collison Center Crushers 10-2, Supremes 10-2, Croton Elevator 10-2.

WOMEN'S LOWER 8 LEAGUE. RESULTS: Bonnie's Share Design def. The Associates 11-21, 21-16, 21-7.

STANDINGS: Collison Center Crushers 10-2, Supremes 10-2, Croton Elevator 10-2.

WOMEN'S LOWER 8 LEAGUE. RESULTS: Bonnie's Share Design def. The Associates 11-21, 21-16, 21-7.

STANDINGS: Collison Center Crushers 10-2, Supremes 10-2, Croton Elevator 10-2.

WOMEN'S LOWER 8 LEAGUE. RESULTS: Bonnie's Share Design def. The Associates 11-21, 21-16, 21-7.

STANDINGS: Collison Center Crushers 10-2, Supremes 10-2, Croton Elevator 10-2.

WOMEN'S LOWER 8 LEAGUE. RESULTS: Bonnie's Share Design def. The Associates 11-21, 21-16, 21-7.

STANDINGS: Collison Center Crushers 10-2, Supremes 10-2, Croton Elevator 10-2.

WOMEN'S LOWER 8 LEAGUE. RESULTS: Bonnie's Share Design def. The Associates 11-21, 21-16, 21-7.

STANDINGS: Collison Center Crushers 10-2, Supremes 10-2, Croton Elevator 10-2.

WOMEN'S LOWER 8 LEAGUE. RESULTS: Bonnie's Share Design def. The Associates 11-21, 21-16, 21-7.

STANDINGS: Collison Center Crushers 10-2, Supremes 10-2, Croton Elevator 10-2.

WOMEN'S LOWER 8 LEAGUE. RESULTS: Bonnie's Share Design def. The Associates 11-21, 21-16, 21-7.

STANDINGS: Collison Center Crushers 10-2, Supremes 10-2, Croton Elevator 10-2.

WOMEN'S LOWER 8 LEAGUE. RESULTS: Bonnie's Share Design def. The Associates 11-21, 21-16, 21-7.

STANDINGS: Collison Center Crushers 10-2, Supremes 10-2, Croton Elevator 10-2.

WOMEN'S LOWER 8 LEAGUE. RESULTS: Bonnie's Share Design def. The Associates 11-21, 21-16, 21-7.

STANDINGS: Collison Center Crushers 10-2, Supremes 10-2, Croton Elevator 10-2.

WOMEN'S LOWER 8 LEAGUE. RESULTS: Bonnie's Share Design def. The Associates 11-21, 21-16, 21-7.

STANDINGS: Collison Center Crushers 10-2, Supremes 10-2, Croton Elevator 10-2.

SCOREBOARD

Table with columns for District, Team, W, L, Pct, GB. Includes District 2AA, District 3AA, District 4AA, District 5A, District 6A, District 7A, District 8A, District 9A, District 10A, District 11A, District 12A, District 13A, District 14A, District 15A, District 16A, District 17A, District 18A, District 19A, District 20A, District 21A, District 22A, District 23A, District 24A, District 25A, District 26A, District 27A, District 28A, District 29A, District 30A, District 31A, District 32A, District 33A, District 34A, District 35A, District 36A, District 37A, District 38A, District 39A, District 40A, District 41A, District 42A, District 43A, District 44A, District 45A, District 46A, District 47A, District 48A, District 49A, District 50A, District 51A, District 52A, District 53A, District 54A, District 55A, District 56A, District 57A, District 58A, District 59A, District 60A, District 61A, District 62A, District 63A, District 64A, District 65A, District 66A, District 67A, District 68A, District 69A, District 70A, District 71A, District 72A, District 73A, District 74A, District 75A, District 76A, District 77A, District 78A, District 79A, District 80A, District 81A, District 82A, District 83A, District 84A, District 85A, District 86A, District 87A, District 88A, District 89A, District 90A, District 91A, District 92A, District 93A, District 94A, District 95A, District 96A, District 97A, District 98A, District 99A, District 100A.

Table with columns for District, Team, W, L, Pct, GB. Includes District 101A, District 102A, District 103A, District 104A, District 105A, District 106A, District 107A, District 108A, District 109A, District 110A, District 111A, District 112A, District 113A, District 114A, District 115A, District 116A, District 117A, District 118A, District 119A, District 120A, District 121A, District 122A, District 123A, District 124A, District 125A, District 126A, District 127A, District 128A, District 129A, District 130A, District 131A, District 132A, District 133A, District 134A, District 135A, District 136A, District 137A, District 138A, District 139A, District 140A, District 141A, District 142A, District 143A, District 144A, District 145A, District 146A, District 147A, District 148A, District 149A, District 150A, District 151A, District 152A, District 153A, District 154A, District 155A, District 156A, District 157A, District 158A, District 159A, District 160A, District 161A, District 162A, District 163A, District 164A, District 165A, District 166A, District 167A, District 168A, District 169A, District 170A, District 171A, District 172A, District 173A, District 174A, District 175A, District 176A, District 177A, District 178A, District 179A, District 180A, District 181A, District 182A, District 183A, District 184A, District 185A, District 186A, District 187A, District 188A, District 189A, District 190A, District 191A, District 192A, District 193A, District 194A, District 195A, District 196A, District 197A, District 198A, District 199A, District 200A.

Table with columns for District, Team, W, L, Pct, GB. Includes District 201A, District 202A, District 203A, District 204A, District 205A, District 206A, District 207A, District 208A, District 209A, District 210A, District 211A, District 212A, District 213A, District 214A, District 215A, District 216A, District 217A, District 218A, District 219A, District 220A, District 221A, District 222A, District 223A, District 224A, District 225A, District 226A, District 227A, District 228A, District 229A, District 230A, District 231A, District 232A, District 233A, District 234A, District 235A, District 236A, District 237A, District 238A, District 239A, District 240A, District 241A, District 242A, District 243A, District 244A, District 245A, District 246A, District 247A, District 248A, District 249A, District 250A, District 251A, District 252A, District 253A, District 254A, District 255A, District 256A, District 257A, District 258A, District 259A, District 260A, District 261A, District 262A, District 263A, District 264A, District 265A, District 266A, District 267A, District 268A, District 269A, District 270A, District 271A, District 272A, District 273A, District 274A, District 275A, District 276A, District 277A, District 278A, District 279A, District 280A, District 281A, District 282A, District 283A, District 284A, District 285A, District 286A, District 287A, District 288A, District 289A, District 290A, District 291A, District 292A, District 293A, District 294A, District 295A, District 296A, District 297A, District 298A, District 299A, District 300A.

Table with columns for District, Team, W, L, Pct, GB. Includes District 301A, District 302A, District 303A, District 304A, District 305A, District 306A, District 307A, District 308A, District 309A, District 310A, District 311A, District 312A, District 313A, District 314A, District 315A, District 316A, District 317A, District 318A, District 319A, District 320A, District 321A, District 322A, District 323A, District 324A, District 325A, District 326A, District 327A, District 328A, District 329A, District 330A, District 331A, District 332A, District 333A, District 334A, District 335A, District 336A, District 337A, District 338A, District 339A, District 340A, District 341A, District 342A, District 343A, District 344A, District 345A, District 346A, District 347A, District 348A, District 349A, District 350A, District 351A, District 352A, District 353A, District 354A, District 355A, District 356A, District 357A, District 358A, District 359A, District 360A, District 361A, District 362A, District 363A, District 364A, District 365A, District 366A, District 367A, District 368A, District 369A, District 370A, District 371A, District 372A, District 373A, District 374A, District 375A, District 376A, District 377A, District 378A, District 379A, District 380A, District 381A, District 382A, District 383A, District 384A, District 385A, District 386A, District 387A, District 388A, District 389A, District 390A, District 391A, District 392A, District 393A, District 394A, District 395A, District 396A, District 397A, District 398A, District 399A, District 400A.

Table with columns for District, Team, W, L, Pct, GB. Includes District 401A, District 402A, District 403A, District 404A, District 405A, District 406A, District 407A, District 408A, District 409A, District 410A, District 411A, District 412A, District 413A, District 414A, District 415A, District 416A, District 417A, District 418A, District 419A, District 420A, District 421A, District 422A, District 423A, District 424A, District 425A, District 426A, District 427A, District 428A, District 429A, District 430A, District 431A, District 432A, District 433A, District 434A, District 435A, District 436A, District 437A, District 438A, District 439A, District 440A, District 441A, District 442A, District 443A, District 444A, District 445A, District 446A, District 447A, District 448A, District 449A, District 450A, District 451A, District 452A, District 453A, District 454A, District 455A, District 456A, District 457A, District 458A, District 459A, District 460A, District 461A, District 462A, District 463A, District 464A, District 465A, District 466A, District 467A, District 468A, District 469A, District 470A, District 471A, District 472A, District 473A, District 474A, District 475A, District 476A, District 477A, District 478A, District 479A, District 480A, District 481A, District 482A, District 483A, District 484A, District 485A, District 486A, District 487A, District 488A, District 489A, District 490A, District 491A, District 492A, District 493A, District 494A, District 495A, District 496A, District 497A, District 498A, District 499A, District 500A.

Table with columns for District, Team, W, L, Pct, GB. Includes District 501A, District 502A, District 503A, District 504A, District 505A, District 506A, District 507A, District 508A, District 509A, District 510A, District 511A, District 512A, District 513A, District 514A, District 515A, District 516A, District 517A, District 518A, District 519A, District 520A, District 521A, District 522A, District 523A, District 524A, District 525A, District 526A, District 527A, District 528A, District 529A, District 530A, District 531A, District 532A, District 533A, District 534A, District 535A, District 536A, District 537A, District 538A, District 539A, District 540A, District 541A, District 542A, District 543A, District 544A, District 545A, District 546A, District 547A, District 548A, District 549A, District 550A, District 551A, District 552A, District 553A, District 554A, District 555A, District 556A, District 557A, District 558A, District 559A, District 560A, District 561A, District 562A, District 563A, District 564A, District 565A, District 566A, District 567A, District 568A, District 569A, District 570A, District 571A, District 572A, District 573A, District 574A, District 575A, District 576A, District 577A, District 578A, District 579A, District 580A, District 581A, District 582A, District 583A, District 584A, District 585A, District 586A, District 587A, District 588A, District 589A, District 590A, District 591A, District 592A, District 593A, District 594A, District 595A, District 596A, District 597A, District 598A, District 599A, District 600A.

Table with columns for District, Team, W, L, Pct, GB. Includes District 601A, District 602A, District 603A, District 604A, District 605A, District 606A, District 607A, District 608A, District 609A, District 610A, District 611A, District 612A, District 613A, District 614A, District 615A, District 616A, District 617A, District 618A, District 619A, District 620A, District 621A, District 622A, District 623A, District 624A, District 625A, District 626A, District 627A, District 628A, District 629A, District 630A, District 631A, District 632A, District 633A, District 634A, District 635A, District 636A, District 637A, District 638A, District 639A, District 640A, District 641A, District 642A, District 643A, District 644A, District 645A, District 646A, District 647A, District 648A, District 649A, District 650A, District 651A, District 652A, District 653A, District 654A, District 655A, District 656A, District 657A, District 658A, District 659A, District 660A, District 661A, District 662A, District 663A, District 664A, District 665A, District 666A, District 667A, District 668A, District 669A, District 670A, District 671A, District 672A, District 673A, District 674A, District 675A, District 676A, District 677A, District 678A, District 679A, District 680A, District 681A, District 682A, District 683A, District 684A, District 685A, District 686A, District 687A, District 688A, District 689A, District 690A, District 691A, District 692A, District 693A, District 694A, District 695A, District 696A, District 697A, District 698A, District 699A, District 700A.

Table with columns for District, Team, W, L, Pct, GB. Includes District 701A, District 702A, District 703A, District 704A, District 705A, District 706A, District 707A, District 708A, District 709A, District 710A, District 711A, District 712A, District 713A, District 714A, District 715A, District 716A, District 717A, District 718A, District 719A, District 720A, District 721A, District 722A, District 723A, District 724A, District 725A, District 726A, District 727A, District 728A, District 729A, District 730A, District 731A, District 732A, District 733A, District 734A, District 735A, District 736A, District 737A, District 738A, District 739A, District 740A, District 741A, District 742A, District 743A, District 744A, District 745A, District 746A, District 747A, District 748A, District 749A, District 750A, District 751A, District 752A, District 753A, District 754A, District 755A, District 756A, District 757A, District 758A, District 759A, District 760A, District 761A, District 762A, District 763A, District 764A, District 765A, District 766A, District 767A, District 768A, District 769A, District 770A, District 771A, District 772A, District 773A, District 774A, District 775A, District 776A, District 777A, District 778A, District 779A, District 780A, District 781A, District 782A, District 783A, District 784A, District 785A, District 786A, District 787A, District 788A, District 789A, District 790A, District 791A, District 792A, District 793A, District 794A, District 795A, District 796A, District 797A, District 798A, District 799A, District 800A.

Table with columns for District, Team, W, L, Pct, GB. Includes District 801A, District 802A, District 803A, District 804A, District 805A, District 806A, District 807A, District 808A, District 809A, District 810A, District 811A, District 812A, District 813A, District 814A, District 815A, District 816A, District 817A, District 818A, District 819A, District 820A, District 821A, District 822A, District 823A, District 824A, District 825A, District 826A, District 827A, District 828A, District 829A, District 830A, District 831A, District 832A, District 833A, District 834A, District 835A, District 836A, District 837A, District 838A, District 839A, District 840A, District 841A, District 842A, District 843A, District 844A, District 845A, District 846A, District 847A, District 848A, District 849A, District 850A, District 851A, District 852A, District 853A, District 854A, District 855A, District 856A, District 857A, District 858A, District 859A, District 860A, District 861A, District 862A, District 863A, District 864A, District 865A, District 866A, District 867A, District 868A, District 869A, District 870A, District 871A, District 872A, District 873A, District 874A, District 875A, District 876A, District 877A, District 878A, District 879A, District 880A, District 881A, District 882A, District 883A, District 884A, District 885A, District 886A, District 887A, District 888A, District 889A, District 890A, District 891A, District 892A, District 893A, District 894A, District 895A, District 896A, District 897A, District 898A, District 899A, District 900A.

Table with columns for District, Team, W, L, Pct, GB. Includes District 901A, District 902A, District 903A, District 904A, District 905A, District 906A, District 907A, District 908A, District 909A, District 910A, District 911A, District 912A, District 913A, District 914A, District 915A, District 916A, District 917A, District 918A, District 919A, District 920A, District 921A, District 922A, District 923A, District 924A, District 925A, District 926A, District 927A, District 928A, District 929A, District 930A, District 931A, District 932A, District 933A, District