

HISTORIC HOMES OF YANKTON

A Look At The Burleigh-Wallbaum House

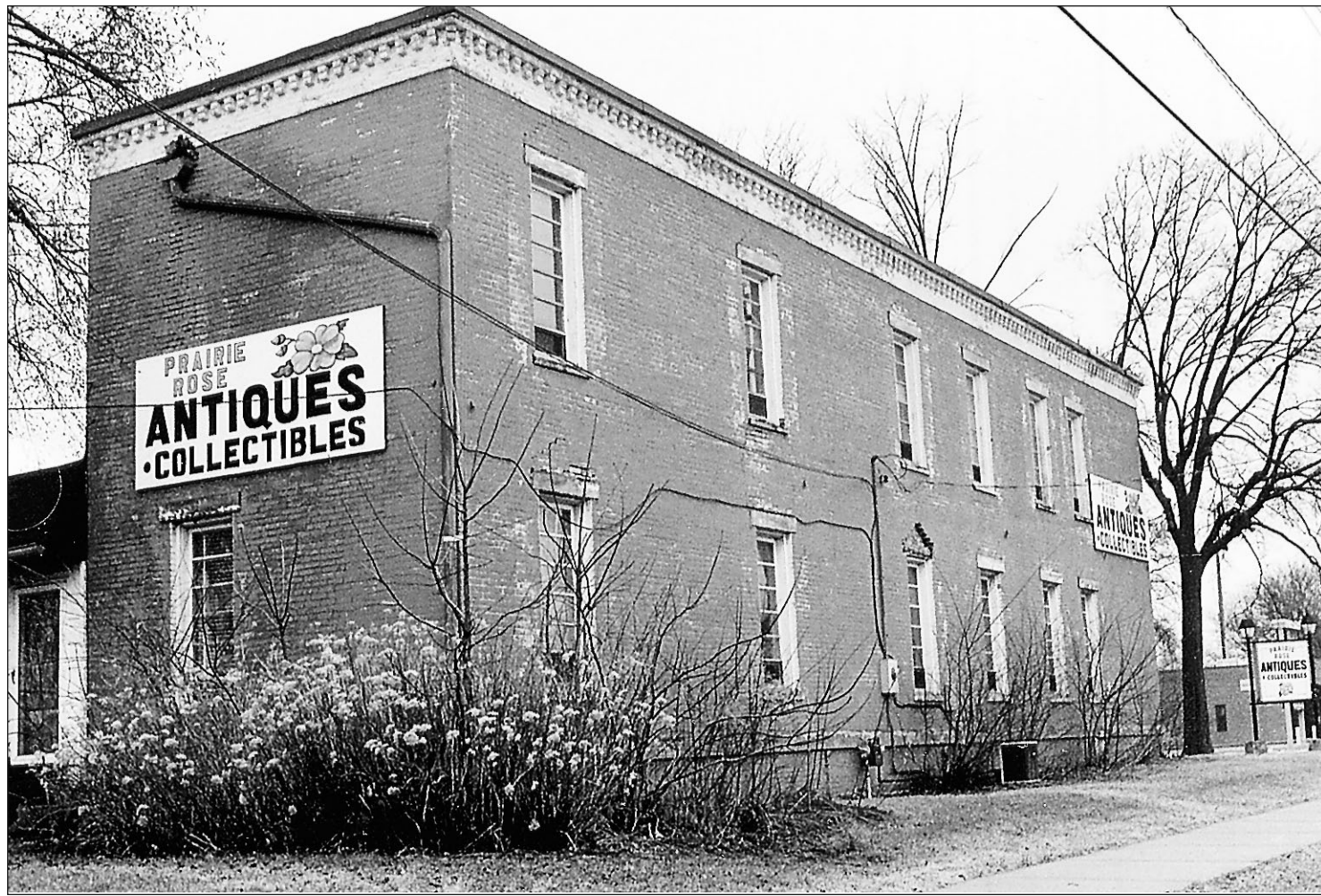
Yankton's Territorial Homes, Revisited — A Sesquicentennial Series

Many Yankton residents are not aware that as many as 55 homes built in territorial Yankton before 1889 still stand and that nearly all are currently occupied by proud owners. Therefore, it has become a mission in this sesquicentennial year of Yankton Questers Dakota Territory Chapter No. 794 to bring a random sampling of these homes to the public's attention. With the cooperation of the Yankton Daily Press and Dakotan, Chapter No. 794 is, on a regular basis, featuring both well-known and lesser-known historical homes as they appear today along with brief history of builder, succeeding occupants and anecdotal information.

As a bicentennial project in 1976, Dorothy Jencks, avid Yankton historian, published *Some Historic Homes of Yankton* with financial assistance from the Yankton Women's

Club. Her 96-page booklet identified 85 territorial homes and several boarding houses with photos and stories. Though more than twenty structures featured in the Jencks' book have since disappeared, the majority remain. Structural changes have occurred in most, both interior and exterior; however, basic architectural styles remain true to the period.

The series began May 13 with the Ephraim Miner chalkstone home built in 1873 at 613 Douglas Street, followed May 20 by the Fred Schnauber house at 717 Walnut Street. The public is cordially invited to offer comments as the series continues. Please contact committee members Maysel Goltz, Dee Horacek, Marilyn Nyberg, or Maxine Kinsley, chairwoman and photographer.



The Burleigh-Wallbaum House 114 Broadway

Dakota Territory Chapter No. 794

In 1875 the Burleigh-Wallbaum house was built for the Walter A. Burleigh family by contractors MacNamara and Delany at 114 Broadway, a prominent location near the river in a village which extended only a few blocks in either direction. Brick for this home was shipped up the river from St. Joseph, Missouri. The walnut staircase leading to the second floor still exists. The main entrance was originally on the west side where there is now a sunporch.

"The Friendly Fleece" was the title historian Robert Karolevitz gave Dr. Walter Burleigh. Karolevitz's article on the Yankton pioneer appeared in the *Yankton Daily Press and Dakotan* June 20, 1994. Burleigh practiced medicine in Kittanning, Pennsylvania; during this time he campaigned successfully for Abraham Lincoln, receiving the political "plum" of Indian agent to the Yankton Sioux at Greenwood in 1861. He and his family arrived in Dakota Territory by steamboat in 1861. Karolevitz describes Burleigh's questionable activities—hiring his wife and sisters as school teachers (there was no school) and skimming supplies meant for Indian tribes. He accumulated enough money to buy



thousands of acres in Bon Homme county where the family lived on their ranch (now the Bon Homme Hutterite Colony) for seven years.

After being replaced as Indian agent he purchased *The Dakotian* newspaper in Yankton to support his successful campaign against J.B.S. Todd as congressional delegate in 1864. He was ousted in 1868 and turned his attentions to the Dakota Southern and the Northern Pacific Railroads. He also owned two steamboats on the Missouri.

The house was bought around the turn of the century by Carl Wallbaum, a druggist, whose wife Elizabeth was the daughter of pioneer Peter Binder. He added the one-story addition on the south side. Carl Wallbaum's grandson Dan Wallbaum remembers his grandfather's love of flowers, especially peonies which were planted in abundance around the house. Dan also told how his grandfather bought the lot across the street (now the parking lot of the county building) to plant a flower garden. He hired a full-time gardener and named the park "Elsie's Garden" in honor of his wife. Another story Dan related was one of the perks Carl received as Yankton mayor: after a snowstorm, the prisoner's in the county jail (just south of the old courthouse) would march down to the Wallbaum home, clear the snow and march back to the jail.

The house, in recent years, has been home to a dress shop, beauty shop and antique shop. The house is currently owned by Allen and Kristi Kokesh who have plans to restore it.

Walter Atward Burleigh eventually left Yankton for greener pastures in Montana and other places, but returned to Yankton where he died on March 8, 1896, at age 76. He is buried in Yankton cemetery. If he indeed left a mixed bag legacy, as some historians believe, the longest street in Yankton, Burleigh Street, bears a testament to his belief and support of the territorial village of Yankton.



Flame Acanthus A Stunning Hummingbird Magnet

BY NORMAN WINTER

McClatchy Newspapers ©2011 MCT

The flame acanthus has leaped to the top of my list of hummingbird plants. A little over a year ago I wrote an article which I gave the family of the year award to the Acanthus family. I did so in a tongue and cheek fashion, but now I am even more convinced after growing this plant.

The flame acanthus is also known by the name hummingbird bush, and I can say it stunningly lives up to both names. In fact for over six weeks it has been thrilling with not only the flaming orange blooms, but the flying visitors they attract, such as the Ruby Throated and the Buff-bellied hummingbirds that dart around like flying acrobats while feasting on the nectar. The Orange-barred Sulphur and Giant Swallowtail butterflies are also there as the blooms appear to be simply irresistible.

Flame acanthus is known botanically as *Anisacanthus quadrifidus* var. *wrightii* and is native in South Central Texas, West Texas and Northern Mexico. It is a drought tolerant tough perennial through zone 7 and a terrific annual elsewhere. Though I have been touting its valuable nectar, the plant also serves as host for the larva of the Janais Patch and Texan Crescentpot butterflies.

The Flame Acanthus comes from a great family of hummingbird/butterfly plants. A few of the others are the Brazilian red cloak, the yellow shrimp plant, *Pachystachys lutea*, Mexican shrimp plant, *Justicia brandegeana*, firespike, *Ondontenema strictum* and Mexican Honeysuckle (*Justicia spicigera*).

As you might expect from a Texas native plant, it is environmentally friendly. It has virtually no pest other than our treasured butterflies, and is both drought and cold tolerant. Luxuriant soil is not required but it does perform best with good drainage in full to partial sun. Dig your planting hole two to three times as wide as the rootball but no deeper setting the plant at the same depth it is growing in the container. Apply a good layer of mulch after planting for moisture conservation and to deter weed growth.

You'll find them developing a spreading, shrub-like habit, reaching around 4 feet in height. The flaming orange color just screams to be planted with blue flowers for a dazzling rendition of the complementary color scheme. For a country cottage garden, think about combining with varieties of the *Salvia farinacea* or mealy cup sage like *Victoria Blue*, *Cathedral Deep Blue* or the taller *Indigo Spires salvia*.

If you are in an area where buddleias or butterfly bush are easily grown, then the Nanho Blue or Empire Blue would make a partnership for butterfly and hummingbird heaven.

The long tubular flowers of the flame acanthus would look quite at home in the tropical style landscape as well. Here you might consider planting in front of a large stand of bananas, or combining with cannas like Bengal Tiger that have a similar flower color.

The flame acanthus is gaining in popularity but it is still not considered a garden staple. There are enough growers, however, that your favorite local garden center should be able to find a supplier. I hope you'll ask for it and give it a try.

Norman Winter is executive director of The National Butterfly Center in Mission, Texas, and author of "Tough-as-Nails Flowers for the South" and "Captivating Combinations: Color and Style in the Garden." Contact him at: winter@naba.org

ON GARDENING

Pentas Are Perfect For Your Style Of Garden

BY NORMAN WINTER

McClatchy Newspapers ©2011 MCT

Pentas seem to be experiencing a revival of sorts and all I can say is a hearty AMEN! Actually it is hard to see why they ever left the popularity chart, unless it is simply just the pure quantity of new plant material showing up at garden centers.

Pentas also go by the name of Egyptian star cluster and are generally classified as a sub-shrub in their native regions. For most of us in the United States they are rock solid, tough-as-nails annuals reaching 18 to 36 inches in height, depending on variety, and attracting butterflies and hummingbirds with a frenzy.

They are normal perennial in zone 8b and higher, provided there is good drainage and they are not apt to sit in cold water-logged soil during the winter. Choose a site in full sun for best flower productions. Prepare the bed by incorporating 3 to 4 inches of organic matter and till to a depth of 8 to 10 inches. While tilling, incorporate two pounds of a slow-release, 12-6-6 fertilizer.

The next step is very important to happiness with your pentas. If your soil is acidic and you grow azaleas, camellias or blueberries with ease, then you will need to add lime to your pentas' planting area. While preparing the soil, add five pounds of a pelletized lime per 100 square feet in sandy soil, or 10 pounds in a clay-based soil. This is recommended because pentas prefer a soil pH of 7.

Many gardeners annually apply lime to grass or vegetable gardens, and in this case, a little



will help the pentas have flowers all summer. By the way, they're great in the vase as cut flowers.

Using them in the landscape still seems to be a little bit of struggle for many gardeners, and there is really no reason. A simple way is to pick out your very favorite summer flower and then choose pentas of a complementary color to develop your partnership.

Perhaps the black-eyed Susan is your favorite flower. The solution then might be to pick violet colored pentas to develop your partnership. Even red ones would work stunningly well in what would be considered the analogous color scheme.

den. Many of you know I am a tropical plant nut so I like to use them in a Caribbean style garden where they are boldly planted in front of bananas and elephant ears.

Keep in mind their rich colors make them simply wonderful in any traditional garden placed where evergreen shrubs like hollies, ligustrums, wax myrtles or junipers can serve as a backdrop. Taller selections are also great as cut flowers and used in the vase.

Your garden center more than likely will have several varieties to choose from. In recent years the Butterfly and Graffiti series have become two of my favorites. Look also for the Starla, Monarch and Bismarck pentas.

Once you see the hummingbirds and butterflies visiting your flowers, you will be thrilled that you brought back pentas to your garden.

Norman Winter is executive director of The National Butterfly Center in Mission, Texas, and author of "Tough-as-Nails Flowers for the South" and "Captivating Combinations: Color and Style in the Garden." Contact him at: winter@naba.org

Take A Walk In The Wildflowers

Board the bus for a Wildflower Walk with the Northeast Nebraska Resource Conservation & Development (RC&D) Council. This is the fourth year for a tour like this. RC&D Council President and wildflower enthusiast Dennis Wacker says, "We'll be watching for a variety of butterflies, other pollinators, as well as wildflowers. And we'll have a chance to taste some of Mother Nature's edible plants too."

The date is Monday, June 6 starting at the Plainview RC&D office at 8:15 a.m. for coffee with departure at 8:30 and the planned return at approximately 2 p.m. There is a fee which includes transportation and lunch. Pre-registration is requested by June 2.

The planned route will take the group into the northern part of Antelope County, one of the six counties served by the RC&D.

This is also home to one of the state's most ecologically significant and biologically unique landscape (BUL) areas of the Nebraska Natural Legacy Project. The Verdigre-Bazile Creek BUL takes in northern Antelope and all of Knox County and is led by Rebekah Jessen, the project's coordinating biologist.

Included as one of the stops is Shoestring Acres Seed, a native wildflower and grass seed growing operation offering local seeds adapted to upland environments. Games & Parks Commission biologists and botanists will also share their knowledge and expertise of the prairie plants and wildlife at others sites along the way. This educational activity makes it possible to experience Nebraska's diverse native plants and animals up close and in their native habitat. Sign up - it'll be fun!

Creating CURB Appeal

We Pour Grain Bin Floors

- Commercial & Residential Landscape Edging
- Concrete Stamp Overlays
- 30 Different Colors Available

Call Us For Your FREE Estimate

J&J Concrete Edging

Jordan Odens: 605-491-0254
Josh Odens: 605-481-1577 • Office: 605-384-3618
Over 20 years combined experience

Air Duct Cleaning

\$30 OFF

• No Hidden Cost
• Free Estimates
• Free Video Duct Inspection
Expires 6/15/11

665-5700 • 1-800-529-2450