



Partly Cloudy

9 a.m.: **58** | 3 p.m.: **66** | DETAILS: PAGE 2



SATURDAY ■ MAY 12, 2012



YANKTON DAILY PRESS & DAKOTAN



**Yankton To Host ESD
Track Meet Today • 8**



VOLUME 138
NUMBER 15

The Dakotas' Oldest Newspaper | **20 PAGES** | www.yankton.net

75¢



OPEN FOR BUSINESS



ABOVE: Jeff and Judy Wahl are shown in the main room of the new 4,000-square-foot lodge that was built at the Lewis and Clark Resort near the marina west of Yankton. The new facility was built with the hopes of attracting more visitors during the off-season. **RIGHT:** The Wahls sit on the front patio of the new lodge, located just a few yards from the shores of Lewis and Clark Lake, which is reflected in the glass windows behind the couple. (Kelly Hertz/P&D)

Lodge Adds New Element To Local L&C Resort

BY DEREK BARTOS

derek.bartos@yankton.net

The Lewis and Clark Resort in Yankton just got a little bigger.

Owners Jeff and Judy Wahl recently opened the resort's new 4,000-square-foot lodge, hoping to attract additional markets and increase visitors during the tourism off-season.

"We basically built it for family reunions, but we also want to increase our shoulder months' business," Jeff Wahl said.

The new lodge is set up to host a variety of gatherings, such as family and class reunions, corporate and business retreats, weddings and family vacationers, he said. In just a short time, the Wahls have already held several events, with more scheduled for the near future.

"We're satisfied (with business) so far, but we're not as busy as we could be," Wahl said.

The facility overlooks Lewis and Clark Lake just west of Lewis and Clark Marina and Magilly's Lakeside Eatery. Along with views of the lake and its chalkstone bluffs, the lodge features an 1,800-square-foot gathering room, a full kitchen and six bedrooms.

"It absolutely complements the resort," Wahl said. "It's got its own front yard, it's on the bike path, and it just fits in there. It looks like it belongs. All the groups that come out here and look at it are excited about it."

The Wahls lease the resort concession from the State of South Dakota. The Lewis and Clark Resort currently features 24 hotel rooms, 17 modern two-and three-bedroom cabins and an outdoor swimming pool. It is open from May through October each year.

Jeff Van Meeteren, the regional park supervisor for the South Dakota Department of Game, Fish and Parks, said the lodge adds a new dimension to the Lewis and Clark Recreation Area, especially for visitors who aren't campers.

"We tend to be the hub for a lot of family reunions and get-togethers, and we're also turning into a wedding location," he said. "You couple the reunions, the weddings, and ability now to host small conferences, it just adds a whole new element to the park that we really haven't had before."

The resort first discussed the idea for the lodge in 2005, but the economic downturn put the project on hold. After many years of waiting, Wahl said he is pleased to finally put



Dakotas Farmers Rebound After Flood

BY BLAKE NICHOLSON

The Associated Press

BISMARCK, N.D. — Customers are tossing back more beer this spring than last at Drinks Inc. on Main Street in Mohall, and it has a lot to do with the barley farmers are once again planting in the fields around the town of about 1,000 people.

A year ago, many tractors and seeders in northwest North Dakota sat idle as snowmelt, heavy rains and overflowing rivers swamped fields and roads. A record number of acres went unplanted, putting a strain on farmers' wallets. That carried over to small-town busi-

nesses that depend largely on farmers' spending for their livelihoods.

It was an unexpected downturn in a state spotted with oil fields and an influx of so many well-paid workers there aren't enough hotels or homes to house them. If it hadn't been for workers from North Dakota's booming oil patch, Drinks Inc. owner Chad Schmidt said, his bar might have collapsed because "farmers weren't spending."

But one mild winter and relatively dry spring later, farmers have a more optimistic outlook — and are willing to buy more beer. In North Dakota, durum wheat acres are expected to double, and the barley crop is projected to

be almost 1 1/2-times bigger. In South Dakota, this year's corn crop could be the biggest in state history.

"It's been really great up here, (with) farmers getting into the fields," Schmidt said.

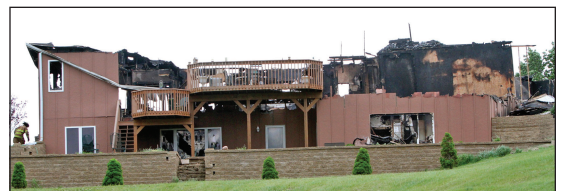
Natural disasters ravaged 33 states last year, prompting more than \$300 million in federal emergency assistance. The Dakotas were hit by flooding from the Missouri River, which cuts through both states and swelled with heavy rain that fell on top of ground still soaked from a snowy winter. North Dakota also saw historic

FARMERS | PAGE 19

FIRE DESTROYS RURAL VERMILLION HOME



PHOTO: DANA NELSON



DAVID LIAS/VERMILLION PLAIN TALK

A fire that destroyed the Annar and Marilyn Pettersen home at 516 E. 316th Street north of Vermillion early Friday morning kept members of the Vermillion Fire Department busy for much of the day. Firefighters, in fact, had to be called back to the fire scene at approximately 3 p.m. that afternoon to cool down a hot spot. Clay County Sheriff Andy Howe said the fire was reported by the Pettersens at 4:36 a.m. Smoke detectors woke the couple, the only residents of the house, in time for them to escape. The house was engulfed in flames by the time firemen arrived. Assistance was provided by the Gayville Fire Department. The cause of the blaze has not yet been determined.



2100 Broadway • Yankton • 665-3412

It's Coming!



May 18 & 19
RIB WAGON



2 Days Only!