



Scott Torness, DPM



Terence Pedersen, DPM

Avera Foot & Ankle Clinic

Avera Professional Office Pavilion – 2nd floor

(605) 668-8601

October 1–April 30:
Monday–Friday: 8:00–5:00
May 1–September 30:
Monday–Friday: 7:00–4:00



Jeff Liudahl, MD



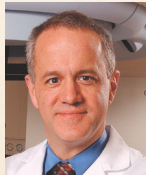
Matt Rumsey, AuD

Avera Yankton Ear, Nose & Throat

409 Summit St., Suite 2800

(605) 665-6820

Monday–Friday:
8:30–4:30



Michael Peterson, MD

Avera Sacred Heart Cancer Center

1115 W. 9th St.

(605) 668-8850

Monday–Friday: 8:00–5:00



Michael Schurrer, MD



Greg Erickson, MD



Scott Hiltunen, MD



Mark Doohen, MD

Avera Sacred Heart Hospital Emergency Department

501 Summit St.

(605) 668-8000

(24 hours a day/
365 days a year)



Gregory Taylor, MD

Avera Sacred Heart Radiology

501 Summit St.

(605) 668-8000



Edwin Cook, DO



Mark Meyer, MD



Anthony Akainda, MD



Dean Benson, PA-C

Avera St. Anthony's Hospital O'Neill, Neb.

300 N. 2nd St.

(402) 336-2611



Jay Allison, MD



Barbara Gutshall, MD



Preston Renshaw, MD



Matthew Winkelbauer, MD



Shelly Herrington, FNP-BC

Avera Medical Group O'Neill O'Neill, Neb.

300 N. 2nd St., Suite 100

(402) 336-2900

Monday–Thursday: 8 a.m. – 5 p.m.

Friday: 8 a.m. – 4 p.m.

Saturday: 9 a.m. – 12 p.m.



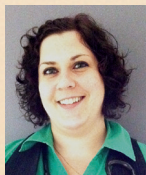
Sharon Spencer, FNP-BC



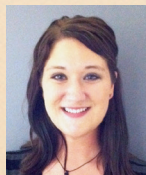
Mark Ptacek, MD



Gary Cuddy, PA-C



Jennifer Stanton, PA-C



Paige Trausch, PA-C

